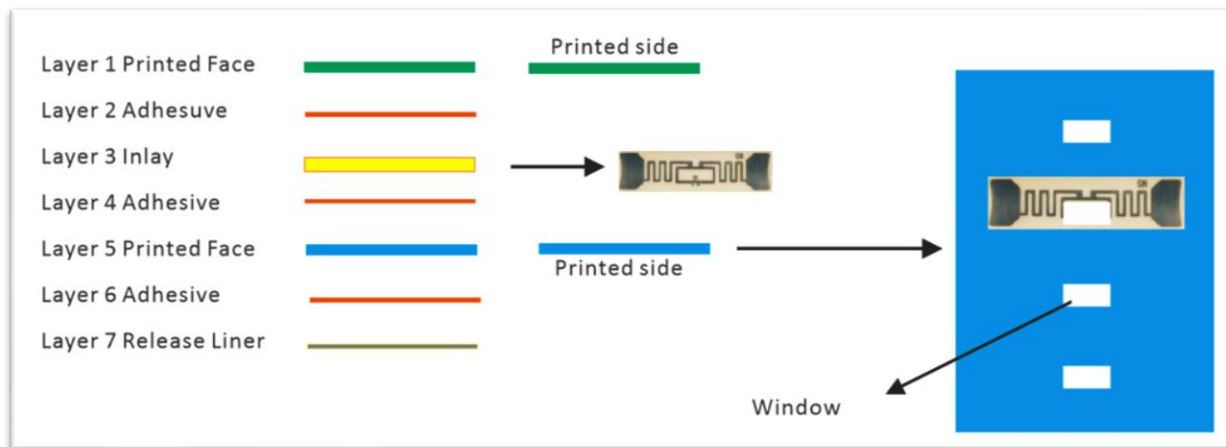
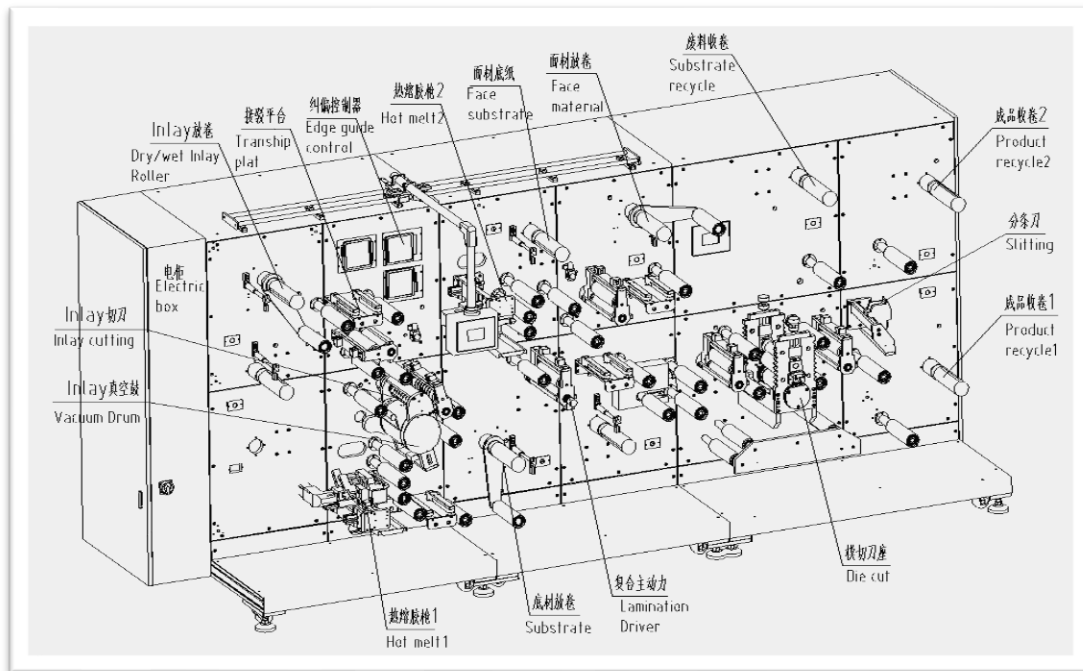


RFID Label Automatic Lamination Converting Machine - CL-822



1.1) Technical Specifications

Power Supply	380 V/50 Hz/8000 W
Production Speed	Up to 50M/Min (Subject to label material)
Laminate accuracy	±0.5 mm in condition of High precision material printing
Label Max Width	190 mm
Label Max Length	520mm (die-cut length)
Label Max Thickness	Less 230g by single layer
Label inner Diameter	φ76mm
Label external Diameter	Max φ 500mm
Function	RFID dry/wet Inlay, paper, fabric Laminating.
Machine overall dimension	4410 x 1600 x 1900 (mm)
Approximate Weight	Approx 4000 KGS

1.2) Applications

- 1) Ordinary paper RFID lamination.
- 2) Hand-tag RFID lamination.
- 3) Care-label RFID lamination.
- 4) **Dry and Wet inlay lamination.**
- 5) Cutting function for Dry Inlay
- 6) Finish paper & body of paper automatically aligned and laminated.
- 7) Double side adhesive label lamination.
- 8) Standard adhesive label lamination: Label body paper & finish paper split – laminating inlay- Three layers label lamination.

1.3) Configuration

Item	Description	Qty
RFID Label Automatic Lamination Machine	CL-822-3	1 set
Hot melt adhesive glue system	HT-102 (Servo Control) A pair of applicators (Two Heads)	1 set
Roll form die cutting unit	CL-R1 (Servo Control)	1 set
Die cut for window	For layer 5 Printed face	1 set
Piece Form Collect	For Piece form label	1 set